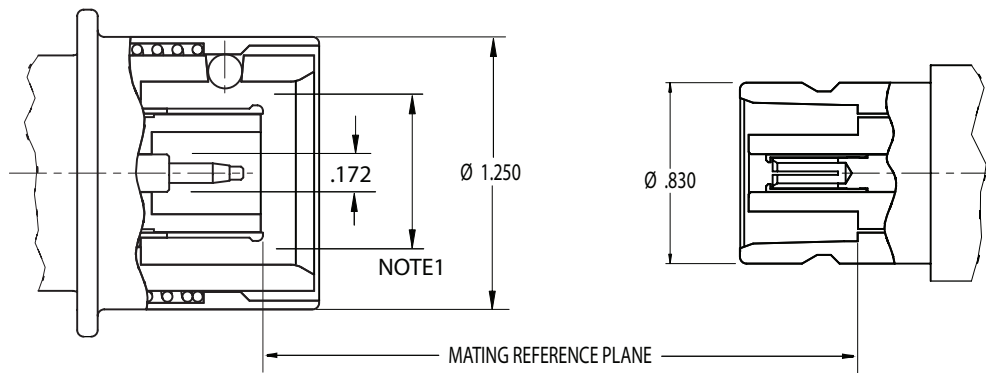




EXPERIENCE. TRU INNOVATION.

# QRM™ INTERFACE



Note 1. Flared to meet Gage Test with .624 ring.

### ELECTRICAL

Nominal Impedance	50 ohms
Frequency Range	DC to 1 GHz
Voltage Rating	3,500 volts rms
Dielectric Withstanding Voltage	8,000 volts rms

### ENVIRONMENTAL

Temperature Range	-85°F to +329°F (-65°C to +165°C)
Vibration	MIL-STD-202 Configurations Available
Shock	
Moisture Resistance	
Corrosion (salt spray)	

### MECHANICAL

Mating Characteristics	per TRU standards
Connector Durability	500 cycles min.
Recommended Torque	N/A (Quick-disconnect Push-on)

### MATERIALS / FINISHES

Body	Brass, Silver or Nickel Plated
Contacts (Inner)	Female: Beryllium Copper, Silver or Gold Plated. Male: Brass, Silver or Gold Plated
Contacts (Outer)	Brass, Silver or Nickel Plated
Contacts (Slotted)	Beryllium Copper, Silver or Nickel Plated
Insulators	Teflon
Gaskets & Seals	Silicone Rubber

## TRU Corporation

245 Lynnfield Street, Peabody, MA 01960 1-800-COAX-TRU (1-800-262-9878) www.trucorporation.com